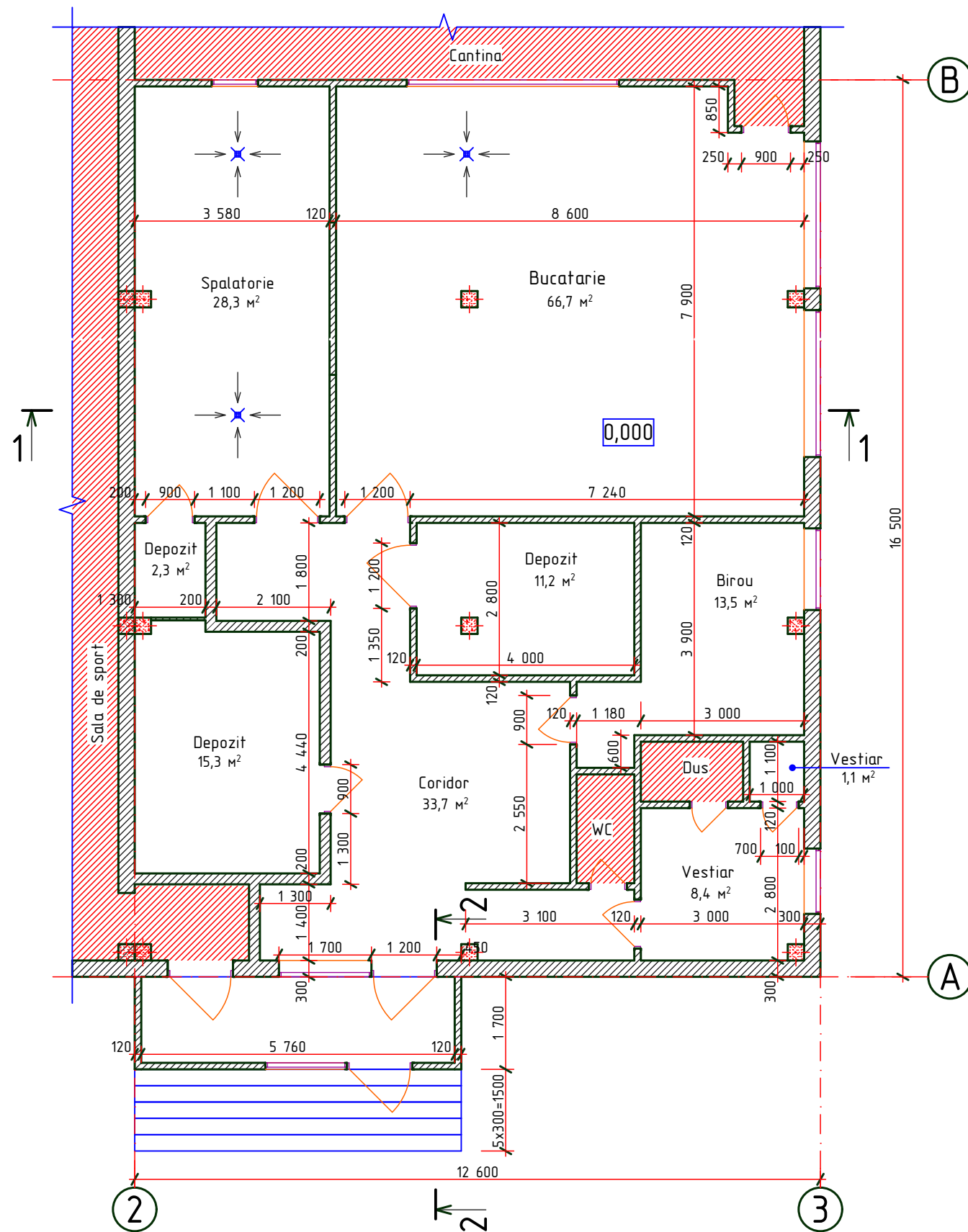


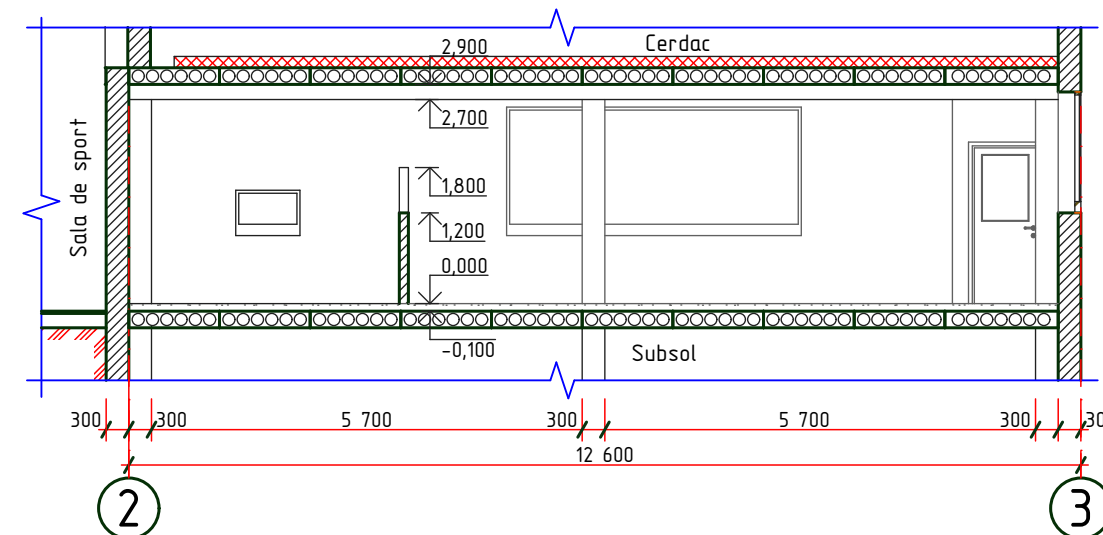
# Plan releveu la cota 0.000

sc. 1:100



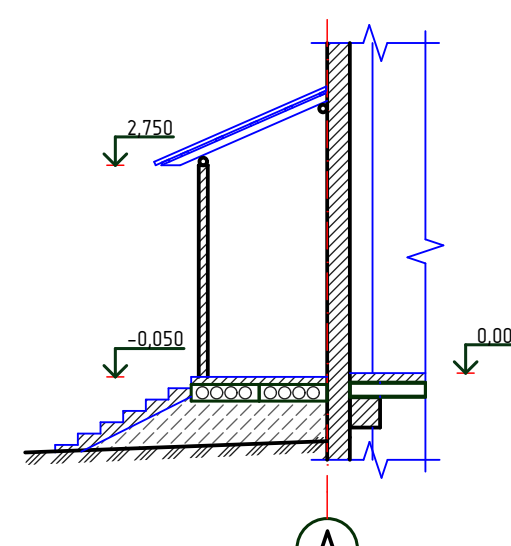
## Sectioniunea 1-1

sc. 1:100



## Sectioniunea 2-2

sc. 1:100



- Incastrarea golurilor
- Stilp existent
- Perete existent

1. Drept cota 0.000 va fi primita cota pardoselei bucatariei.

2016	20.02-D/18-SAC			Reparatia capitala a salii sportive a blocului alimentar in L.T. "G.Cosbuc", bul. Larisa 3, mun. Balti			
A.S.P	Mihaila V.		02.18	Liceul Teoretic	faza	plansa	planse
I.S.P	Hihlat Em.		02.18		PE	4	
Elaborat	Gorbatii A.		02.18	Plan releveu la cota 0,000.		S.R.L. "GEO-CAD-PROIECT"	
						mun. Balti	

Nr.inve.a orig. Data si semnatura Nr.inve.schim.

